



SERVICE FIRE DOOR

Advantages

Made in Canada for Canadian conditions.

Rugged 2" curved or flat slats.

G90 galvanized curtain and hood that does not require further painting.

Structural angle guides and bottom bar are prime painted.

Fluid governor for smooth and quiet operation.

Steel plate brackets are more durable than stamped steel bracket plates.

Resetting is simple and can be performed by a single technician.

Features

2C curved or 2F flat slat curtain, 22ga. steel.

G90 galvanized finish.

1/4" thick steel bracket plates.

2 spring system.

1 year warranty.

3/4, 1 1/2 and 3 hour label (for installation in concrete, masonry, structural steel or gypsum board walls).

4 hour label available (for masonry applications).

Oversized labels available.

Options

Push up, chain hoist, crank, or motor operation.

Solenoid release with 30 sec time delay or 72hr battery back-up.

Smoke detectors & sounder strobes.

Smoke gaskets.

Benefits

Ease of installation and resetting.

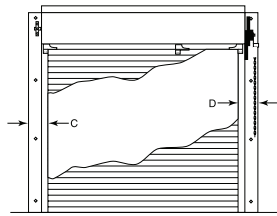
Ensures years of trouble free operation.

Best value for the price.

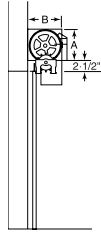


SERVICE FIRE DOOR DETAILS

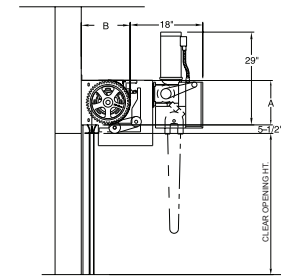
TYPICAL DETAILS



ELEVATION



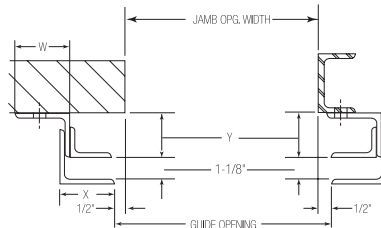
FCF CHAIN



FMF GEARHEAD VERTICAL MOTOR

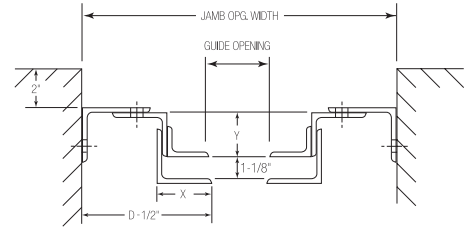
GUIDE DETAILS

MASONRY MOUNTING



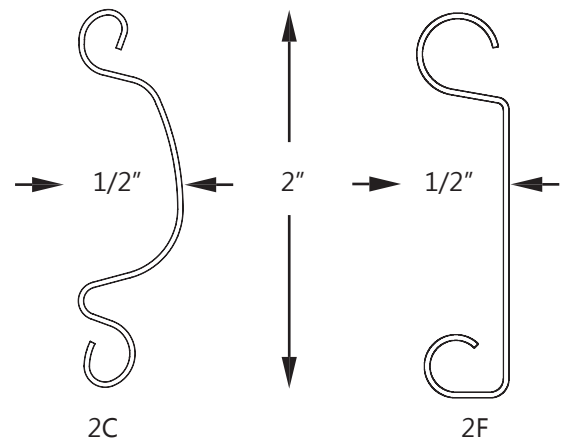
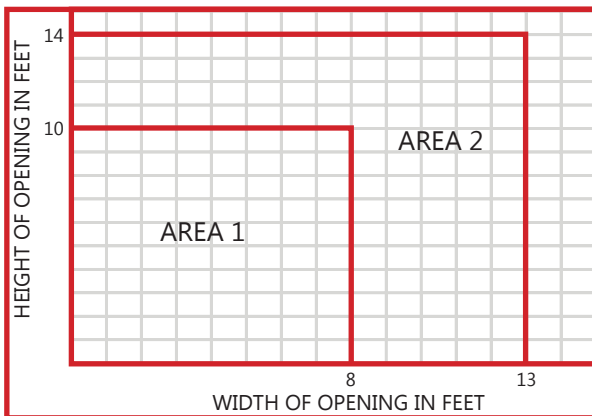
FACE OF WALL GUIDES

STEEL MOUNTING



BETWEEN JAMB GUIDES

AREA CHART



DOOR CLEARANCE CHART

AREA	SLAT	A	B	D	W	X	Y
1	2C/2F	13"	14"	9"	2 1/2"	2 1/2"	2 1/2"
2	2C/2F	15"	16"	9"	3"	3"	2 1/2"

2C & 2F Slats are available in sizes up to 13'-6" wide x 12'-0" high.
Contact SDI for larger doors.